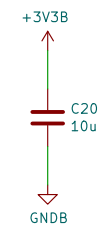
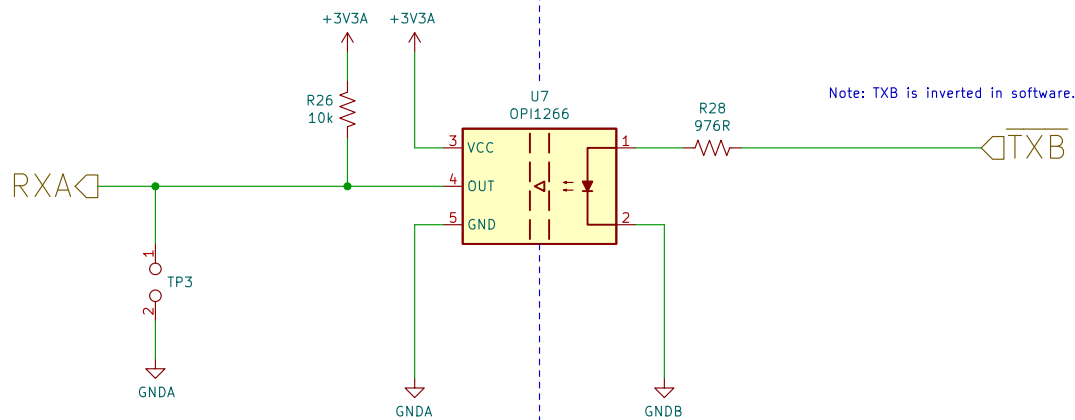
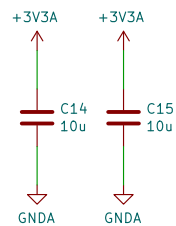
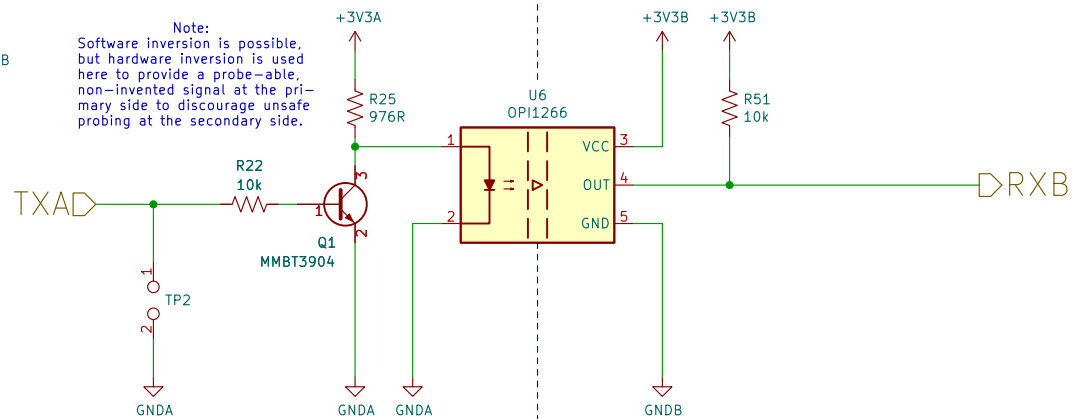


License: CC 0, "No Rights Reserved"		
To the extent possible under law, the designer has waived all copyright and related or neighboring rights.		
https://creativecommons.org/publicdomain/zero/1.0/		
Copyright (C) 2022, 2023 niconiconi		
Sheet: /Isolated DCDC/		
File: isolated_dcdc.sch		
Title: Isolated DC/DC – CWG1000 Combination Wave Generator		
Size: A4	Date: 2022-12-19	Rev: 0.01
KiCad E.D.A. kicad 6.0.9-1.fc36	Id: 3/7	

+3V3A → +3V3A
+3V3B → +3V3B

Note:
Software inversion is possible,
but hardware inversion is used
here to provide a probe-able,
non-invented signal at the pri-
mary side to discourage unsafe
probing at the secondary side.



License: CC 0, "No Rights Reserved"
To the extent possible under law,
the designer has waived all copyright and related or neighboring rights.
<https://creativecommons.org/publicdomain/zero/1.0/>
Copyright (C) 2022, 2023 niconiconi

Sheet: /Isolated UART/
File: isolated_uart.sch

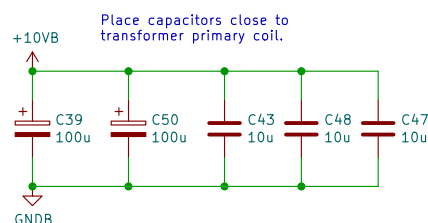
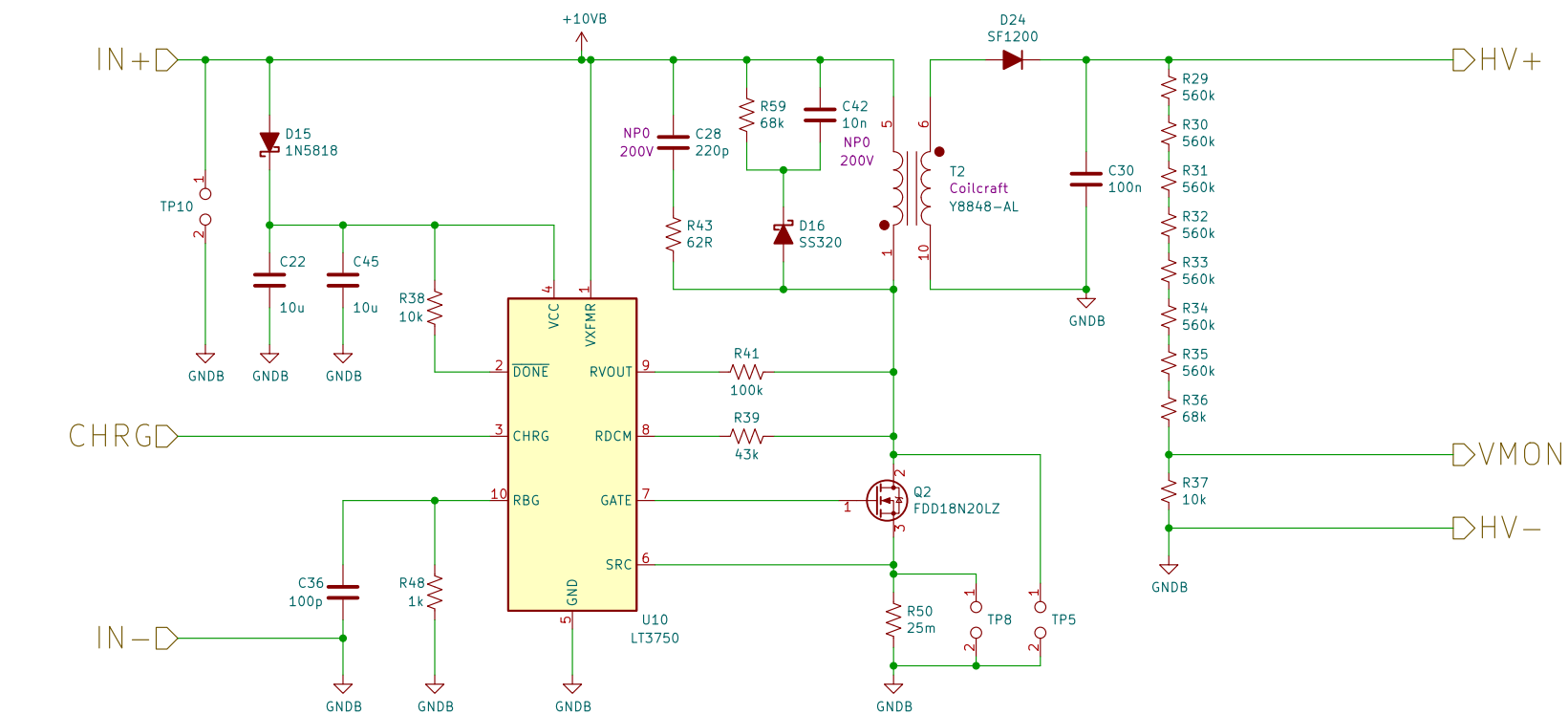
Title: Isolated UART – CWG1000 Combination Wave Generator

Size: A4 Date: 2022-12-19

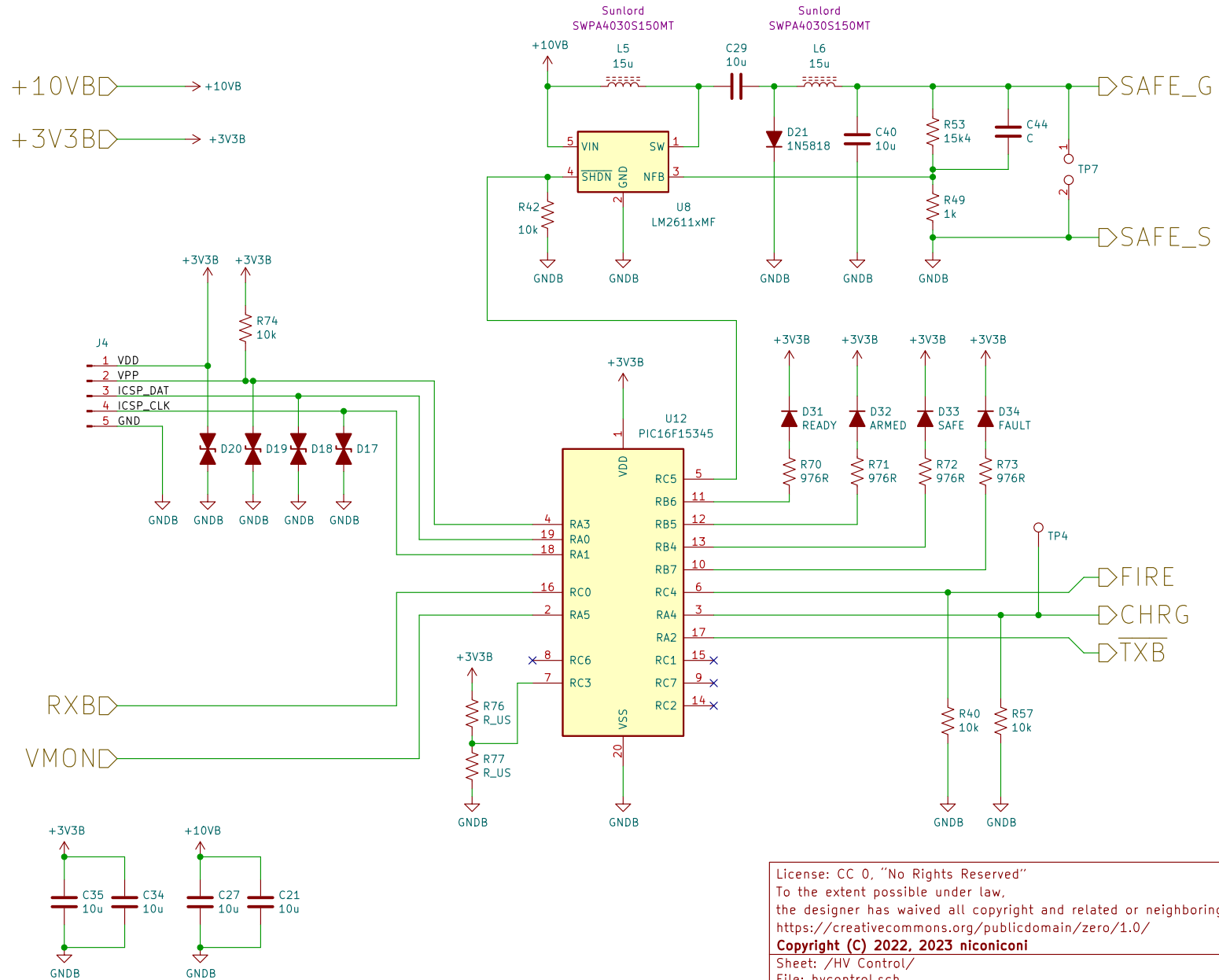
KiCad E.D.A. kicad 6.0.9-1.fc36

Rev: 0.01

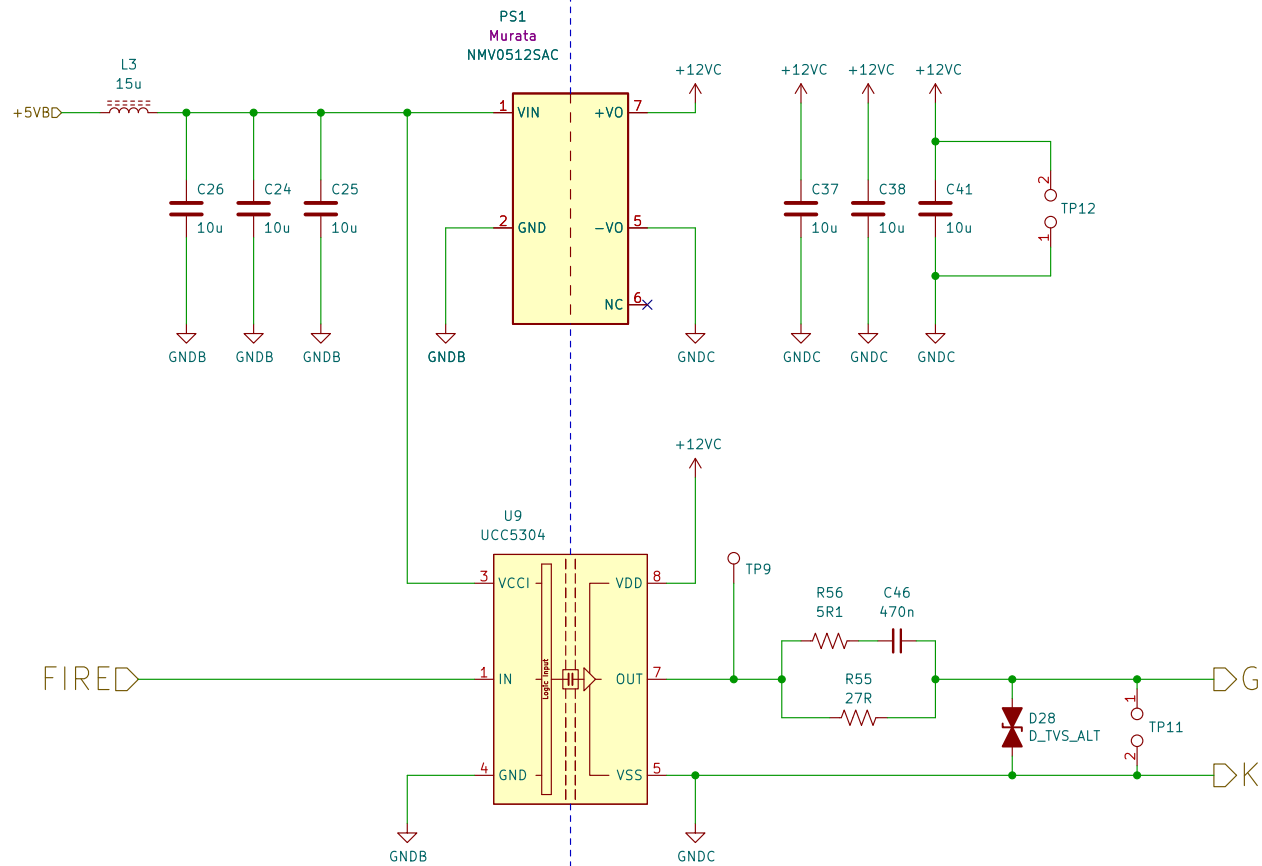
Id: 4/7



License: CC 0, "No Rights Reserved"		
To the extent possible under law, the designer has waived all copyright and related or neighboring rights.		
https://creativecommons.org/publicdomain/zero/1.0/		
Copyright (C) 2022, 2023 niconiconi		
Sheet: /HV PSU/		
File: hvpsu.sch		
Title: High Voltage Supply – CWG1000 Combination Wave Generator		
Size: A4	Date: 2022-12-19	Rev: 0.01
KiCad E.D.A. kicad 6.0.9-1.fc36		Id: 5/7



3000 Vpk Functional Isolation



License: CC 0, "No Rights Reserved"

To the extent possible under law,
the designer has waived all copyright and related or neighboring rights.
<https://creativecommons.org/publicdomain/zero/1.0/>

Copyright (C) 2022, 2023 niconiconi

Sheet: /SCR driver/
File: scrdriver.sch

Title: Isolated Gate Driver – CWG1000 Combination Wave Generator

Size: A4 Date: 2022-12-19

Rev: 0.01

KiCad E.D.A. kicad 6.0.9-1.fc36

Id: 7/7